

Light efficiency:



Light quality:



Color temperature:



Output: 1081 lm

Peak: 1100 cd

Power: 18.2W

PF: 0.89



Product name:

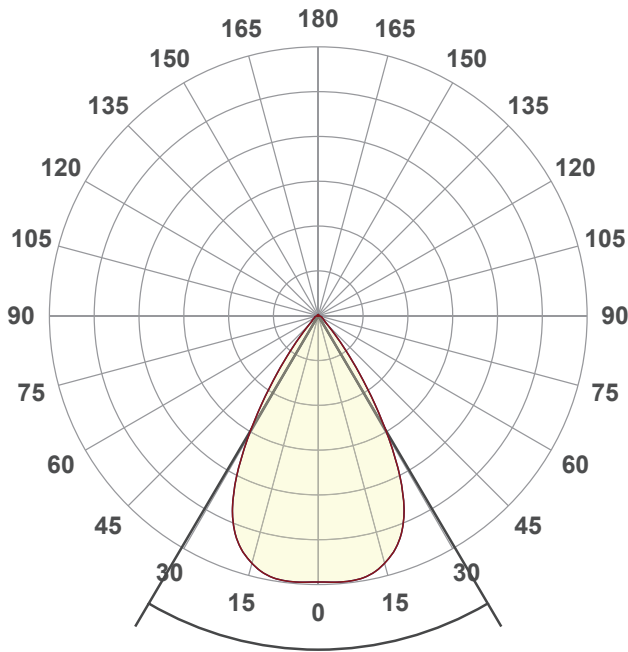
**SORAA VIVID PAR30S**

Item number:

**SP30SW-18-60D-927-03-S3**

Date and time:

**5/4/2021 5:14:35 PM**



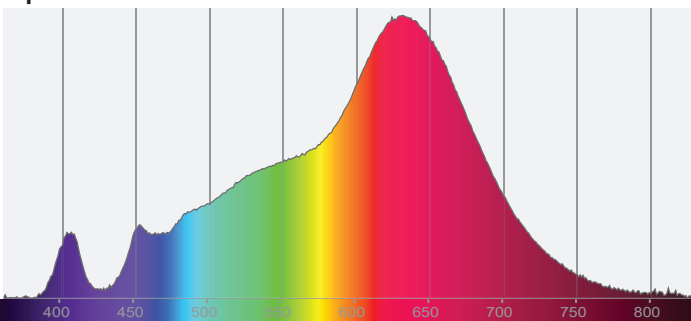
Beam angle

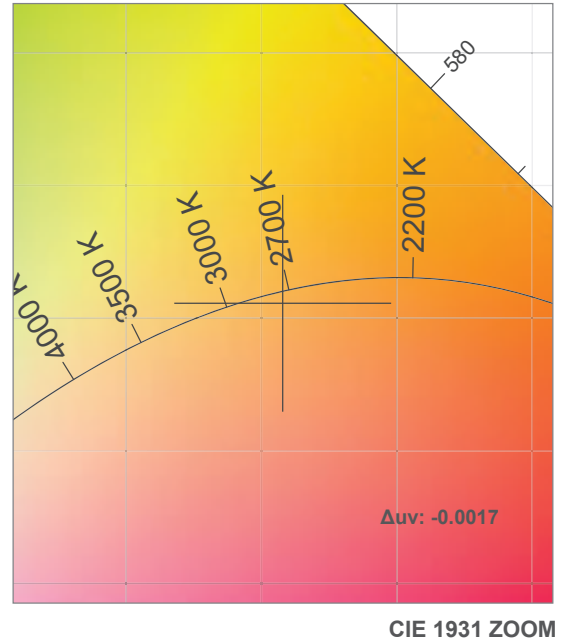
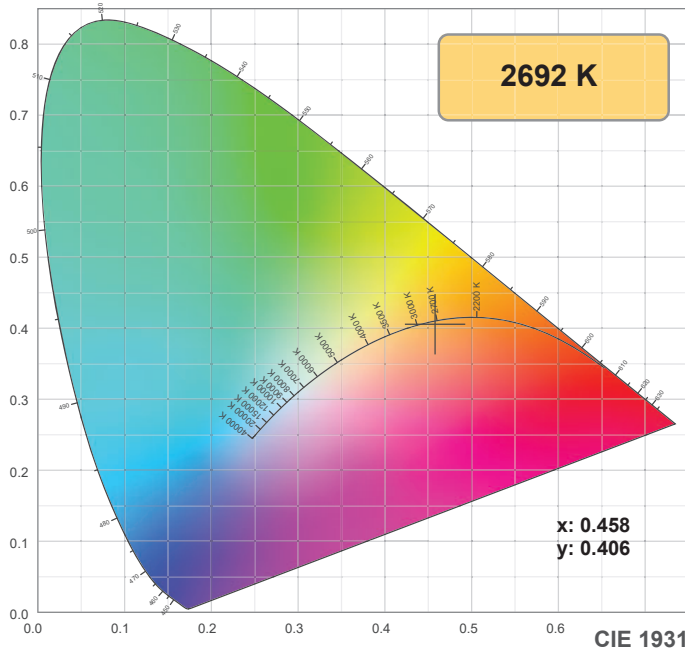
**61°**



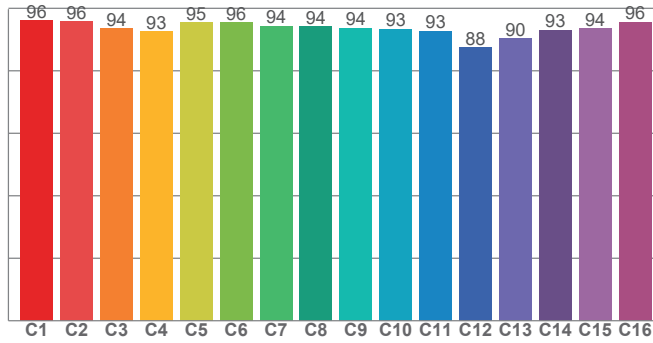
CIE 1931  
x: 0.458  
y: 0.406

Spectra

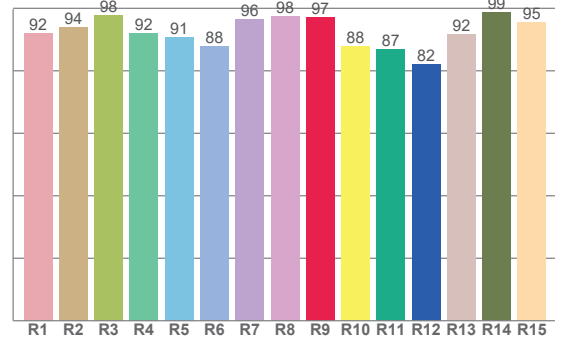




TM30: 93.8



CRI: 93.5 (R1-R8)



CRI R values, only R1-R8 are used to calculate final CRI value

R1	R2	R3	R4	R5	R6	R7	R8	R9	R10	R11	R12	R13	R14	R15
92.1	93.8	97.6	91.9	90.9	87.9	96.4	97.6	97.0	87.7	86.8	82.0	91.6	98.7	95.4

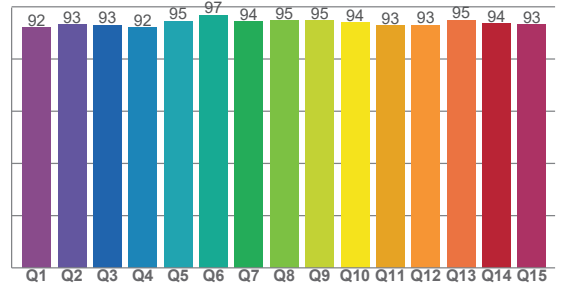
TM30 C values, 16 binned values out of total of 99 C values

C1	C2	C3	C4	C5	C6	C7	C8	C9	C10	C11	C12	C13	C14	C15	C16
96.0	95.8	93.6	92.6	95.4	95.5	94.3	94.1	93.7	93.4	92.7	87.6	90.3	93.1	93.7	95.7

CQS Q values

Q1	Q2	Q3	Q4	Q5	Q6	Q7	Q8	Q9	Q10	Q11	Q12	Q13	Q14	Q15
92.0	93.2	93.1	92.0	94.5	96.8	94.2	94.6	94.7	93.9	92.8	93.0	94.9	93.5	93.1

CQS: 93.6



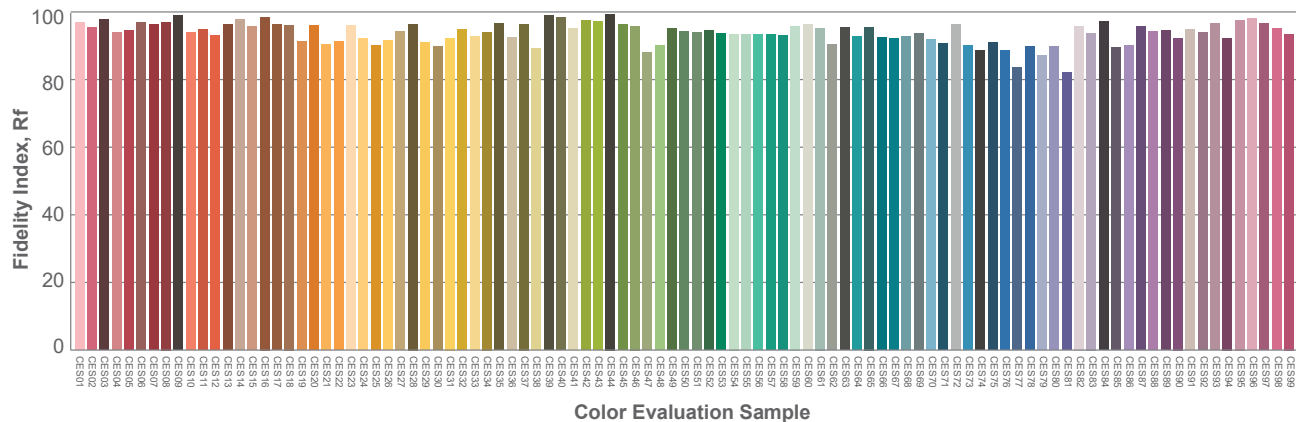
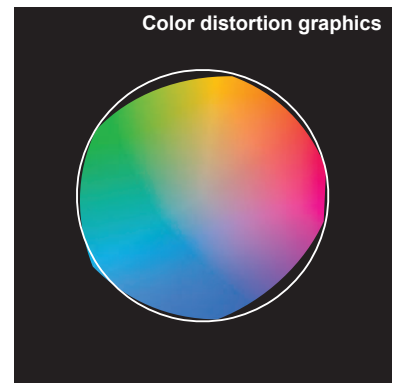
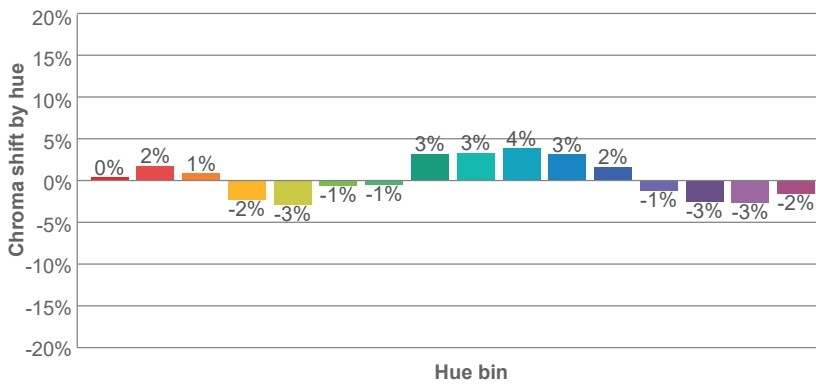
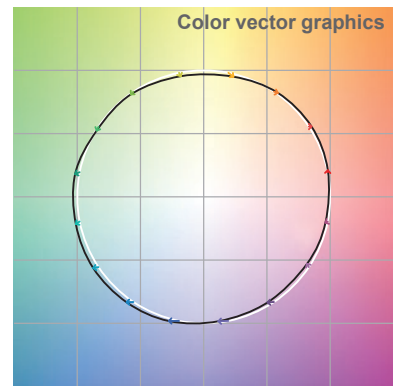
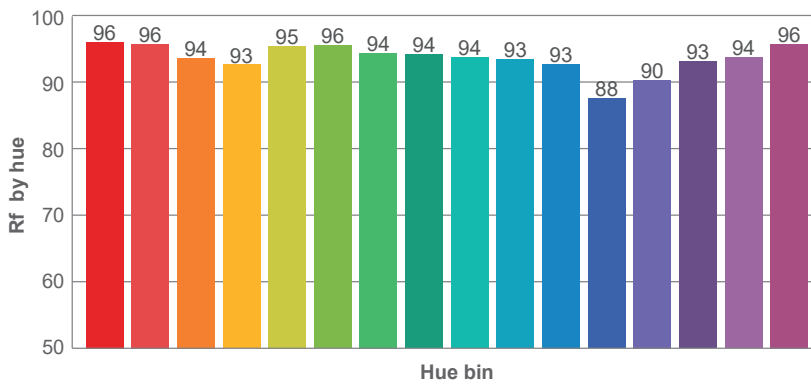
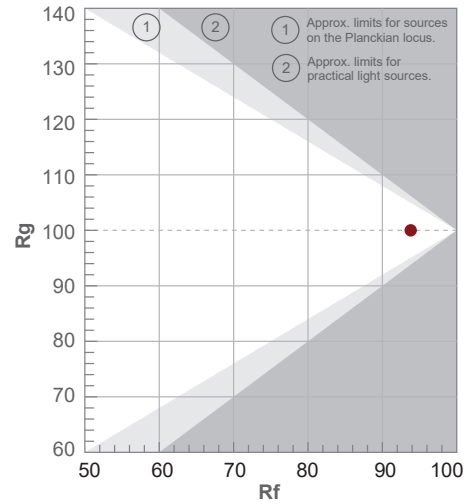
Color parameters

Color temperature	Color rendering index	Red component	Color fidelity	Color gamut	Color quality scale	Color coordinate cie 1931	Color coordinate cie 1931	Color coordinate	Color coordinate	Color deviation from black body
CCT	CRI	CRI R9	TM30 Rf	TM30 Rg	CQS	x	y	u	v	Δuv
2692 K	93.5	97.0	93.8	100.0	93.6	0.458	0.406	0.263	0.350	-0.0017

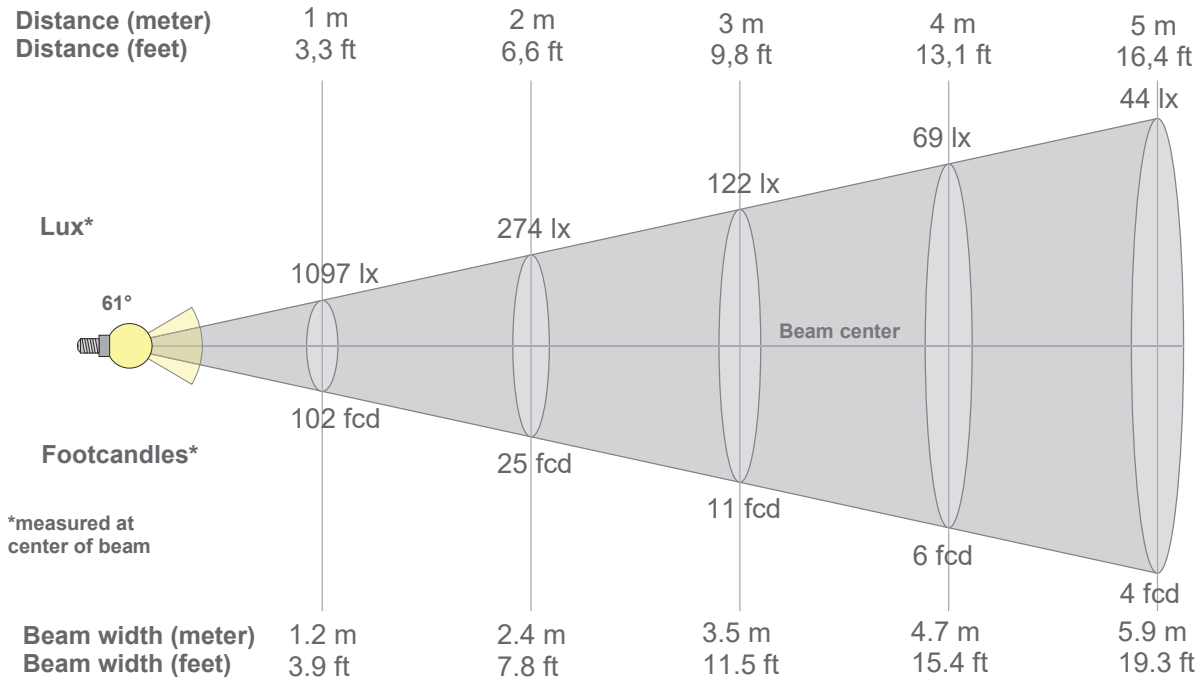
**Rf 93.8**  
Fidelity index Rf

**Rg 100.0**  
Gammut index Rg

Hue Bin	R <sub>f</sub>	Graphic shifts (%)	
		Chroma	Hue
1	96	0%	1%
2	96	2%	-1%
3	94	1%	-3%
4	93	-2%	-5%
5	95	-3%	-1%
6	96	-1%	3%
7	94	-1%	3%
8	94	3%	2%
9	94	3%	1%
10	93	4%	-2%
11	93	3%	-4%
12	88	2%	-8%
13	90	-1%	-8%
14	93	-3%	-4%
15	94	-3%	1%
16	96	-2%	-1%



Beam details



Beam intensities from 1-20m

1m	2m	3m	4m	5m	6m	7m	8m	9m	10m	11m	12m	13m	14m	15m	16m	17m	18m	19m	20m
3.3ft	6.6ft	9.8ft	13.1ft	16.4ft	19.7ft	23ft	26.2ft	29.5ft	32.8ft	36.1ft	39.4ft	42.7ft	45.9ft	49.2ft	52.5ft	55.8ft	59.1ft	62.3ft	65.6ft
1097lx	274lx	122lx	69lx	44lx	30lx	22lx	17lx	14lx	11lx	9lx	8lx	6lx	6lx	5lx	4lx	4lx	3lx	3lx	3lx
101.9fcd	25.5fcd	11.3fcd	6.4fcd	4.1fcd	2.8fcd	2.1fcd	1.6fcd	1.3fcd	1fcd	0.8fcd	0.7fcd	0.6fcd	0.5fcd	0.5fcd	0.4fcd	0.4fcd	0.3fcd	0.3fcd	0.3fcd

Intensities in 0° c-plane

0°	2°	4°	6°	8°	10°	12°	14°	16°	18°	20°	22°	24°	26°	28°	30°	32°	34°	36°	38°
1097	1097	1099	1100	1098	1093	1082	1064	1042	1015	976	928	867	782	685	577	467	365	273	197
100%	100%	100%	100%	100%	100%	99%	97%	95%	93%	89%	85%	79%	71%	62%	53%	43%	33%	25%	18%

Intensities in 90° c-plane

0°	2°	4°	6°	8°	10°	12°	14°	16°	18°	20°	22°	24°	26°	28°	30°	32°	34°	36°	38°
1097	1097	1099	1100	1098	1093	1082	1064	1042	1015	976	928	867	782	685	577	467	365	273	197
100%	100%	100%	100%	100%	100%	99%	97%	95%	93%	89%	85%	79%	71%	62%	53%	43%	33%	25%	18%

Intensities in 180° c-plane

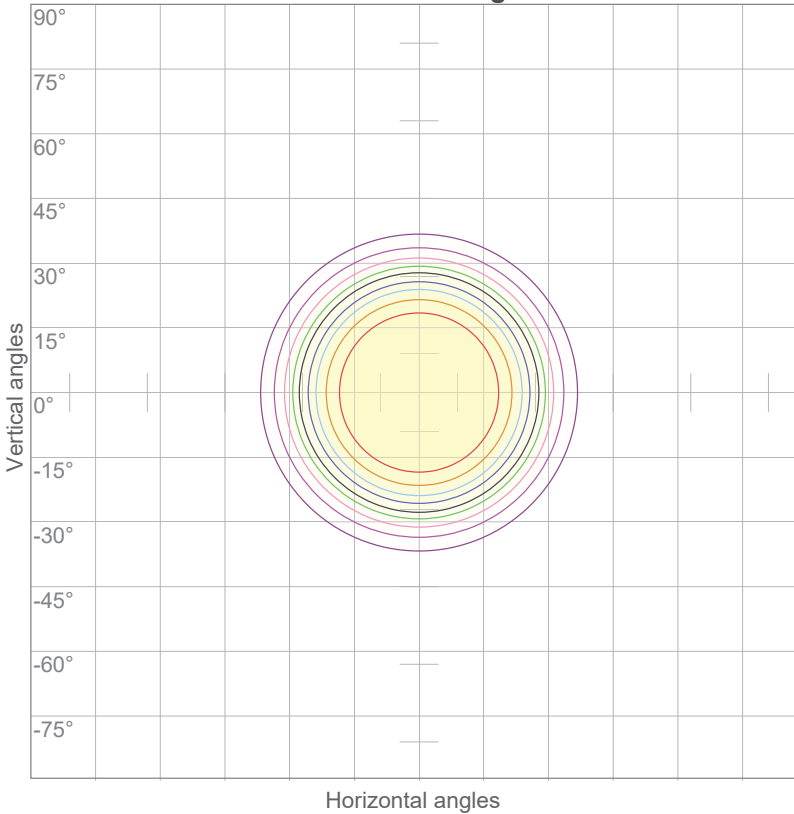
0°	2°	4°	6°	8°	10°	12°	14°	16°	18°	20°	22°	24°	26°	28°	30°	32°	34°	36°	38°
1097	1097	1099	1100	1098	1093	1082	1064	1042	1015	976	928	867	782	685	577	467	365	273	197
100%	100%	100%	100%	100%	100%	99%	97%	95%	93%	89%	85%	79%	71%	62%	53%	43%	33%	25%	18%

Intensities in 270° c-plane

0°	2°	4°	6°	8°	10°	12°	14°	16°	18°	20°	22°	24°	26°	28°	30°	32°	34°	36°	38°
1097	1097	1099	1100	1098	1093	1082	1064	1042	1015	976	928	867	782	685	577	467	365	273	197
100%	100%	100%	100%	100%	100%	99%	97%	95%	93%	89%	85%	79%	71%	62%	53%	43%	33%	25%	18%

Beam angle 50%	Field angle 10%	Cutoff angle 2,5%	Intensity ratio in 120° cone	Intensity ratio in 90° cone
61°	82.5°	108.4°	96.8%	93.0%

ISO candela diagram



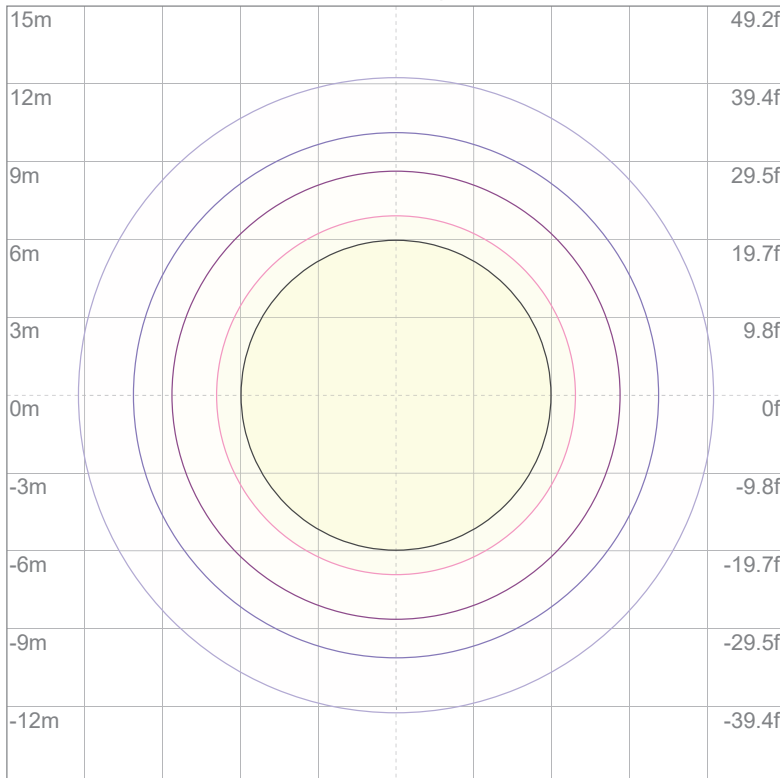
10%	110 cd
20%	219 cd
30%	329 cd
40%	439 cd
50%	548 cd
60%	658 cd
70%	768 cd
80%	877 cd
90%	987 cd

Conditions:

Number of c-planes: 16

Candela at center: 1097 cd

ISO lux diagram



3%	0.329 lx
5%	0.548 lx
10%	1.10 lx
30%	3.29 lx
50%	5.48 lx

Conditions:

Number of c-planes: 16

Lux at center: 11.0 lx

*Lux distribution on a surface when lamp is mounted at 10 meters from the surface.*