

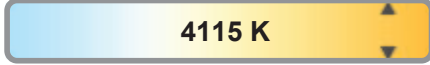
Light efficiency:



Light quality:



Color temperature:



Output: 1330 lm

Peak: 1354 cd

Power: 18.6W

PF: 0.90



Product name:

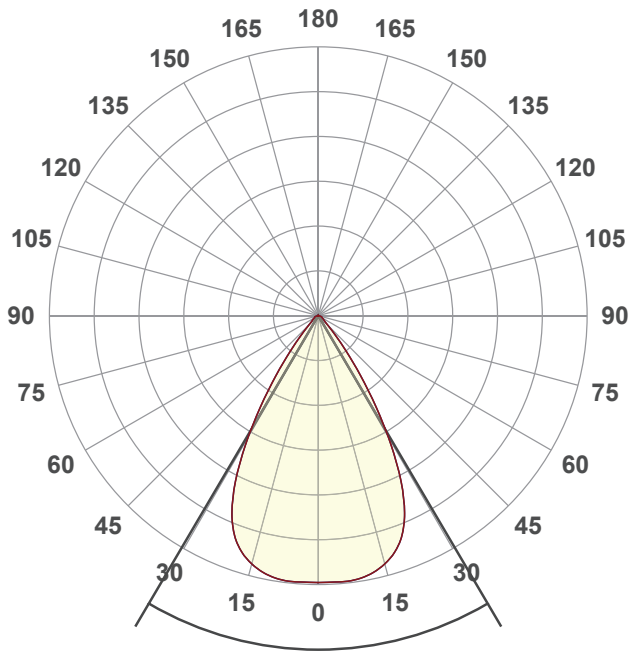
SORAA VIVID PAR30S

Item number:

SP30SW-18-60D-940-03-S3

Date and time:

5/4/2021 6:29:28 PM



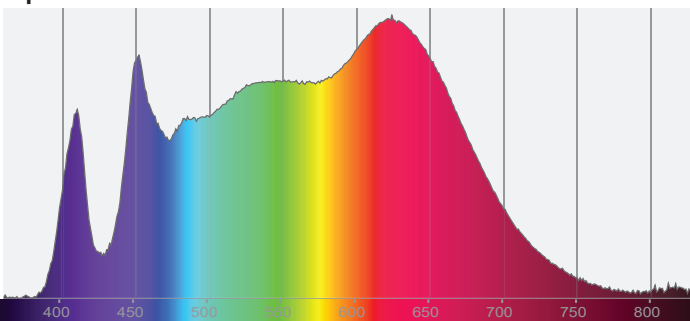
Beam angle

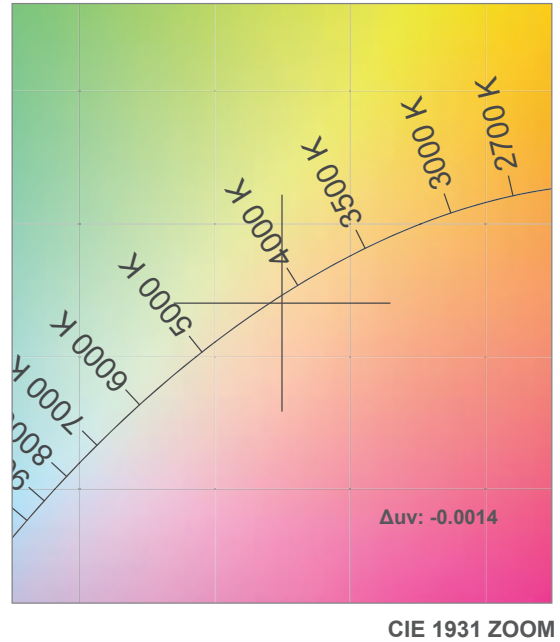
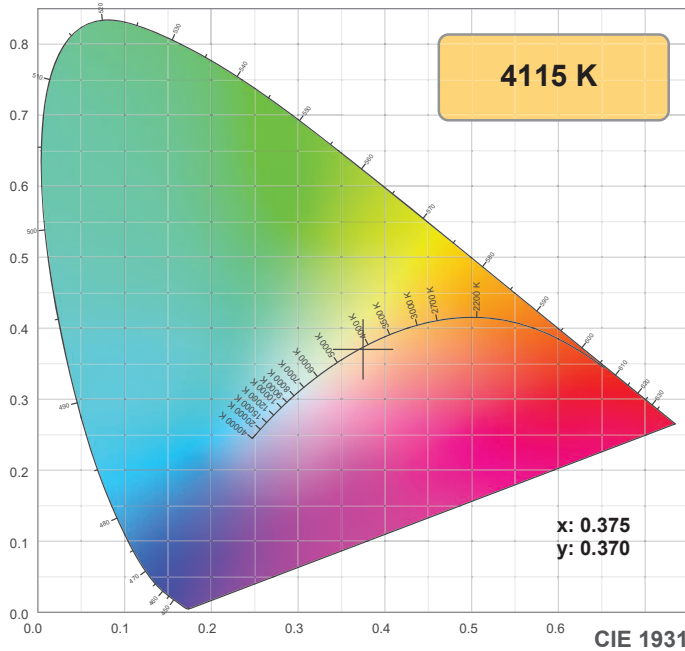
61°



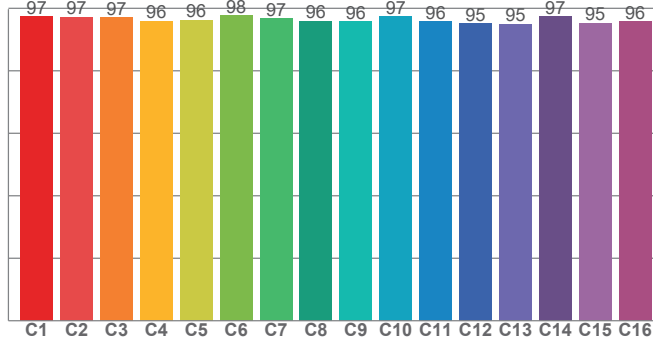
CIE 1931
x: 0.375
y: 0.370

Spectra

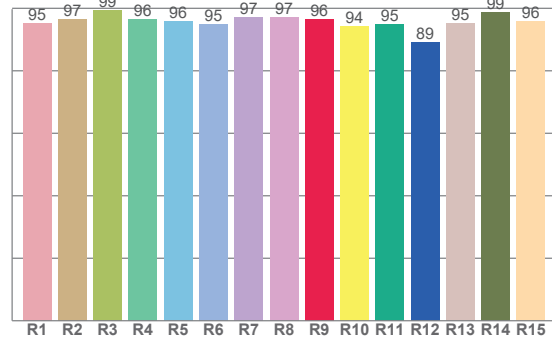




TM30: 96.4



CRI: 96.6 (R1-R8)



CRI R values, only R1-R8 are used to calculate final CRI value

R1	R2	R3	R4	R5	R6	R7	R8	R9	R10	R11	R12	R13	R14	R15
95.3	96.6	99.3	96.5	95.9	94.8	97.2	97.3	96.4	94.3	94.9	89.1	95.2	98.8	95.8

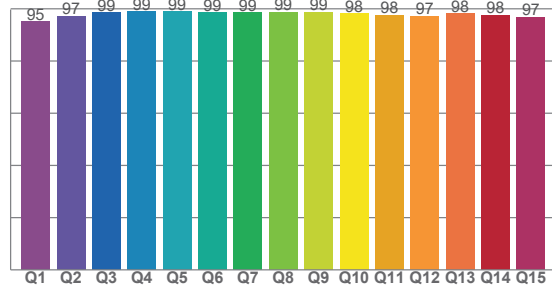
TM30 C values, 16 binned values out of total of 99 C values

C1	C2	C3	C4	C5	C6	C7	C8	C9	C10	C11	C12	C13	C14	C15	C16
97.4	97.2	97.1	95.9	96.3	97.8	96.8	96.0	95.7	97.3	95.9	95.2	95.0	97.3	95.3	95.9

CQS Q values

Q1	Q2	Q3	Q4	Q5	Q6	Q7	Q8	Q9	Q10	Q11	Q12	Q13	Q14	Q15
95.0	97.3	98.5	98.8	98.9	98.5	98.6	98.8	98.8	98.2	97.7	97.3	98.2	97.5	96.8

CQS: 97.7



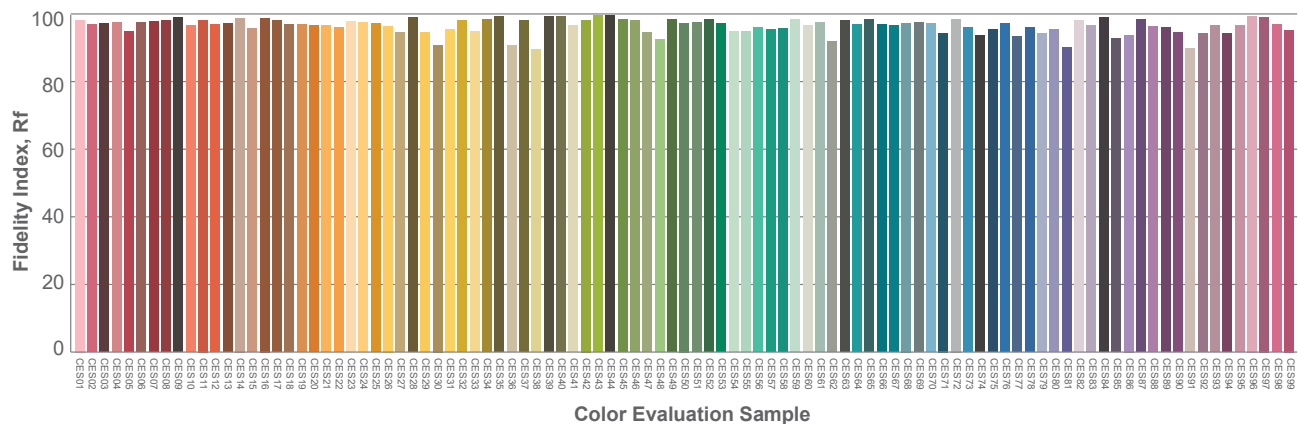
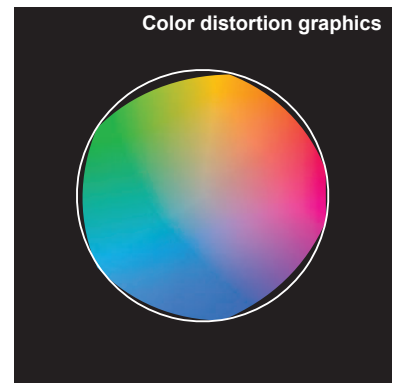
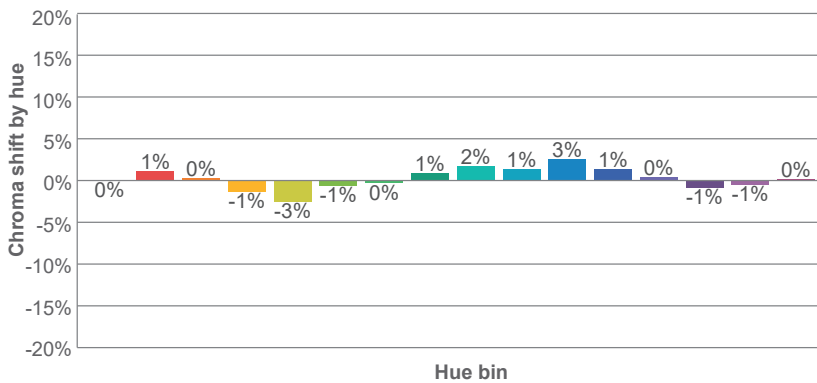
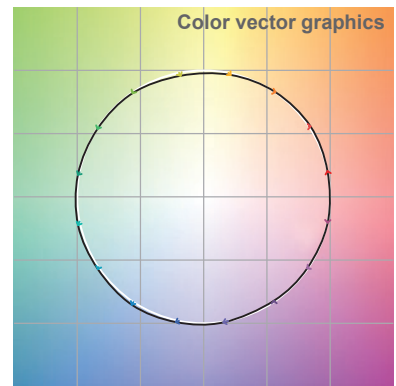
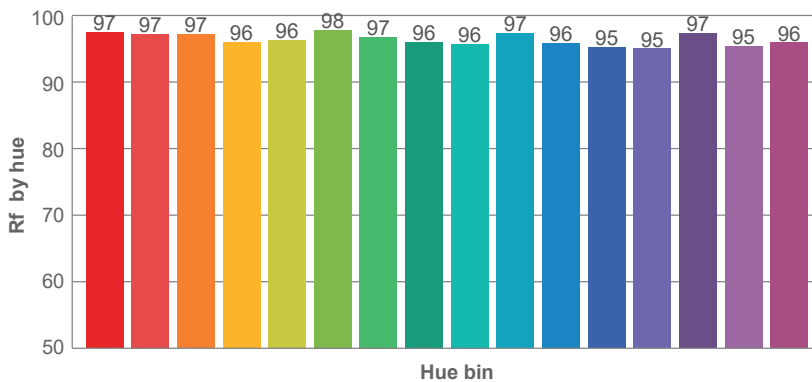
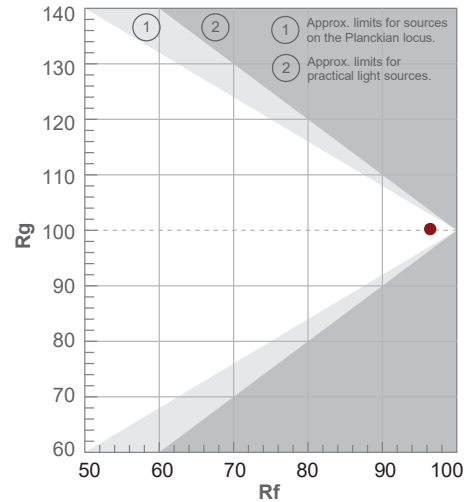
Color parameters

Color temperature	Color rendering index	Red component	Color fidelity	Color gamut	Color quality scale	Color coordinate cie 1931	Color coordinate cie 1931	Color coordinate	Color coordinate	Color deviation from black body
CCT	CRI	CRI R9	TM30 Rf	TM30 Rg	CQS	x	y	u	v	Δuv
4115 K	96.6	96.4	96.4	100.2	97.7	0.375	0.370	0.224	0.332	-0.0014

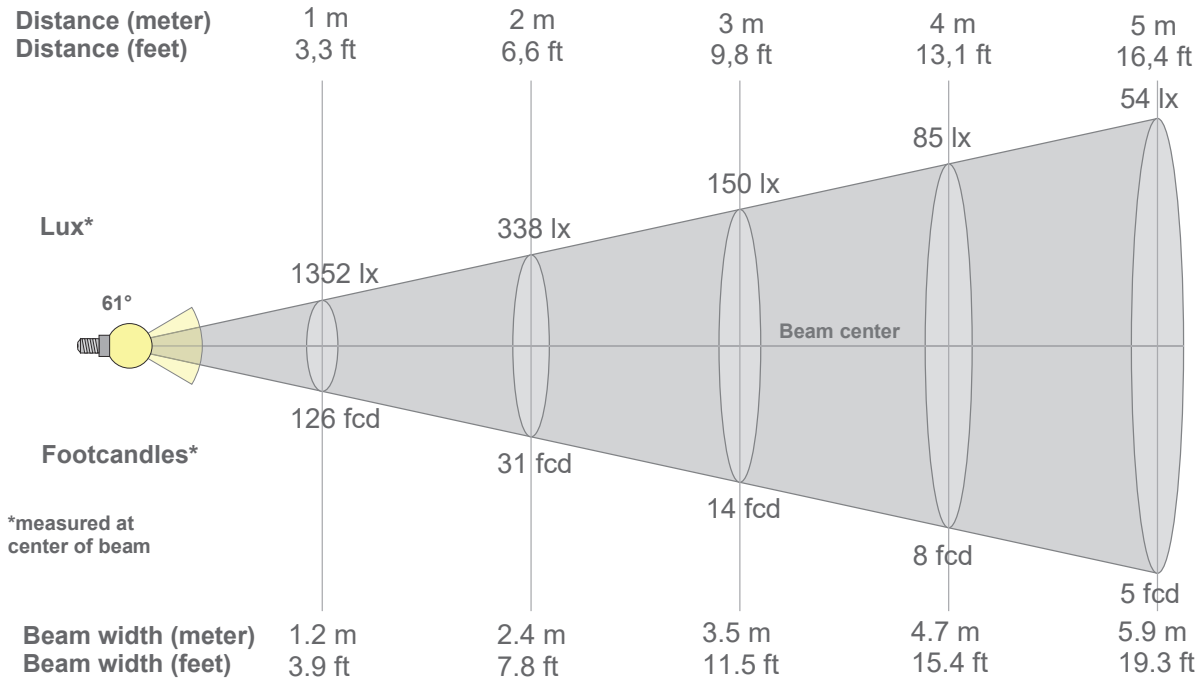
Rf 96.4
Fidelity index Rf

Rg 100.2
Gammut index Rg

Hue Bin	R _f	Graphic shifts (%)	
		Chroma	Hue
1	97	0%	1%
2	97	1%	-1%
3	97	0%	-1%
4	96	-1%	-2%
5	96	-3%	-1%
6	98	-1%	1%
7	97	0%	2%
8	96	1%	2%
9	96	2%	3%
10	97	1%	1%
11	96	3%	0%
12	95	1%	-2%
13	95	0%	-4%
14	97	-1%	1%
15	95	-1%	-2%
16	96	0%	-1%



Beam details



Beam intensities from 1-20m

1m	2m	3m	4m	5m	6m	7m	8m	9m	10m	11m	12m	13m	14m	15m	16m	17m	18m	19m	20m
3.3ft	6.6ft	9.8ft	13.1ft	16.4ft	19.7ft	23ft	26.2ft	29.5ft	32.8ft	36.1ft	39.4ft	42.7ft	45.9ft	49.2ft	52.5ft	55.8ft	59.1ft	62.3ft	65.6ft
1352lx	338lx	150lx	85lx	54lx	38lx	28lx	21lx	17lx	14lx	11lx	9lx	8lx	7lx	6lx	5lx	5lx	4lx	4lx	3lx
125.6fcd	31.4fcd	14fcd	7.9fcd	5fcd	3.5fcd	2.6fcd	2fcd	1.6fcd	1.3fcd	1fcd	0.9fcd	0.7fcd	0.6fcd	0.6fcd	0.5fcd	0.4fcd	0.4fcd	0.3fcd	0.3fcd

Intensities in 0° c-plane

0°	2°	4°	6°	8°	10°	12°	14°	16°	18°	20°	22°	24°	26°	28°	30°	32°	34°	36°	38°
1352	1352	1353	1354	1350	1343	1332	1312	1288	1257	1212	1150	1072	968	844	710	572	447	335	238
100%	100%	100%	100%	100%	99%	98%	97%	95%	93%	90%	85%	79%	72%	62%	53%	42%	33%	25%	18%

Intensities in 90° c-plane

0°	2°	4°	6°	8°	10°	12°	14°	16°	18°	20°	22°	24°	26°	28°	30°	32°	34°	36°	38°
1352	1352	1353	1354	1350	1343	1332	1312	1288	1257	1212	1150	1072	968	844	710	572	447	335	238
100%	100%	100%	100%	100%	99%	98%	97%	95%	93%	90%	85%	79%	72%	62%	53%	42%	33%	25%	18%

Intensities in 180° c-plane

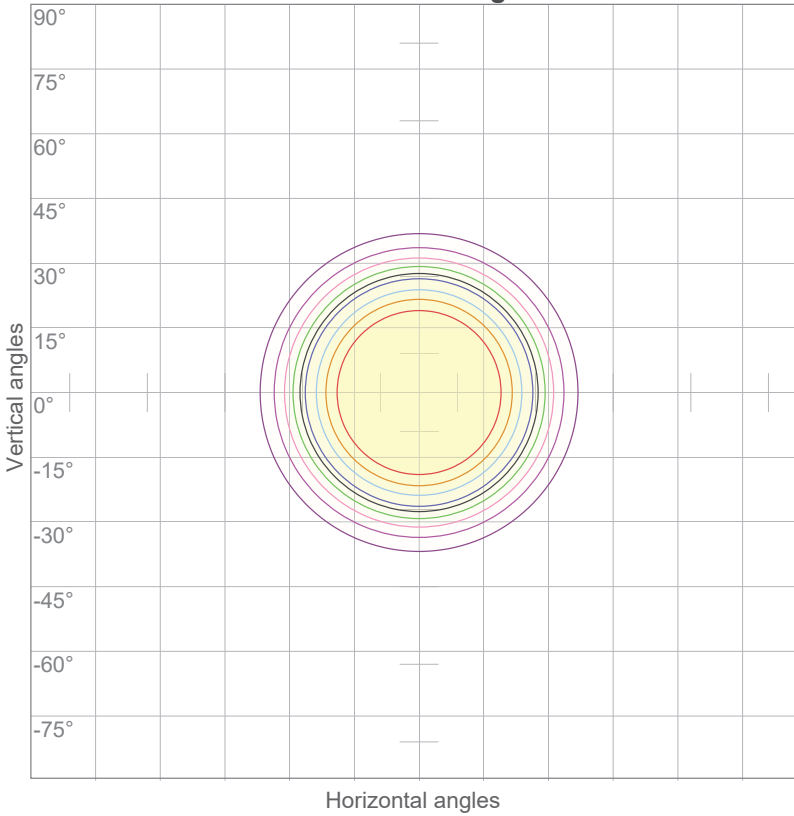
0°	2°	4°	6°	8°	10°	12°	14°	16°	18°	20°	22°	24°	26°	28°	30°	32°	34°	36°	38°
1352	1352	1353	1354	1350	1343	1332	1312	1288	1257	1212	1150	1072	968	844	710	572	447	335	238
100%	100%	100%	100%	100%	99%	98%	97%	95%	93%	90%	85%	79%	72%	62%	53%	42%	33%	25%	18%

Intensities in 270° c-plane

0°	2°	4°	6°	8°	10°	12°	14°	16°	18°	20°	22°	24°	26°	28°	30°	32°	34°	36°	38°
1352	1352	1353	1354	1350	1343	1332	1312	1288	1257	1212	1150	1072	968	844	710	572	447	335	238
100%	100%	100%	100%	100%	99%	98%	97%	95%	93%	90%	85%	79%	72%	62%	53%	42%	33%	25%	18%

Beam angle 50%	Field angle 10%	Cutoff angle 2,5%	Intensity ratio in 120° cone	Intensity ratio in 90° cone
61°	82.3°	107.7°	96.8%	93.0%

ISO candela diagram

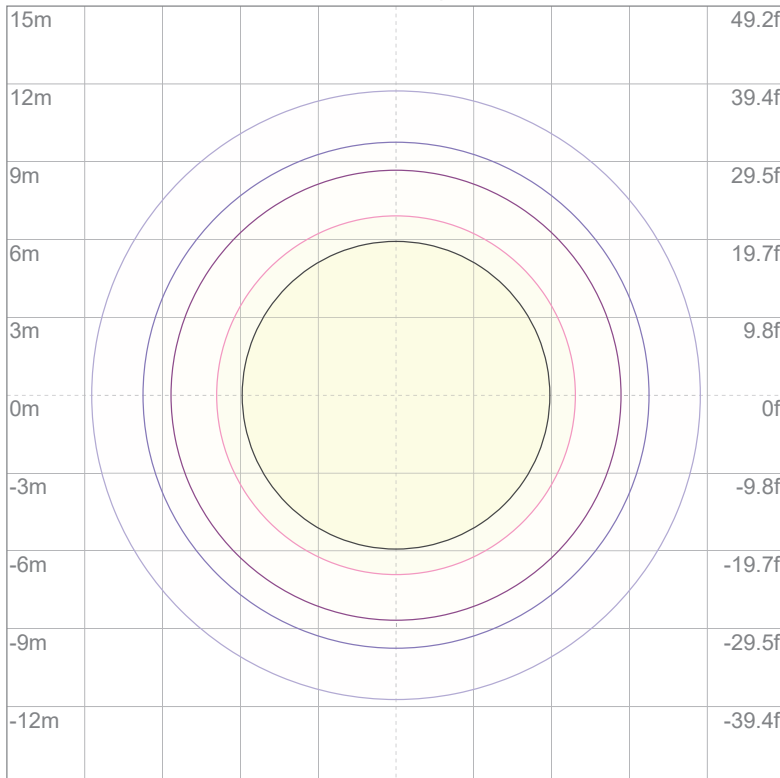


10%	135 cd
20%	270 cd
30%	406 cd
40%	541 cd
50%	676 cd
60%	811 cd
70%	947 cd
80%	1082 cd
90%	1217 cd

Conditions:

Number of c-planes: 16
Candela at center: 1352 cd

ISO lux diagram



3%	0.406 lx
5%	0.676 lx
10%	1.35 lx
30%	4.06 lx
50%	6.76 lx

Conditions:

Number of c-planes: 16
Lux at center: 13.5 lx

Lux distribution on a surface when lamp is mounted at 10 meters from the surface.

Mounting height: 10 meters (33 feet)